

MONTHLY MEMBERSHIP PROGRESS REPORT

LOCATION OKLAHOMA

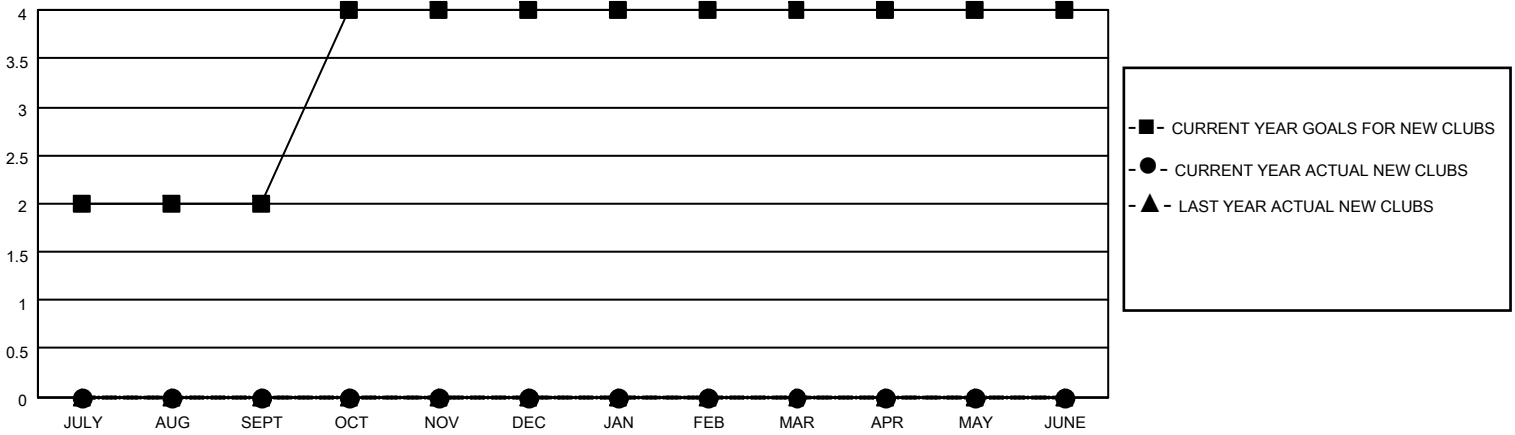
District 3 NW

Results as of: 3/31/2023

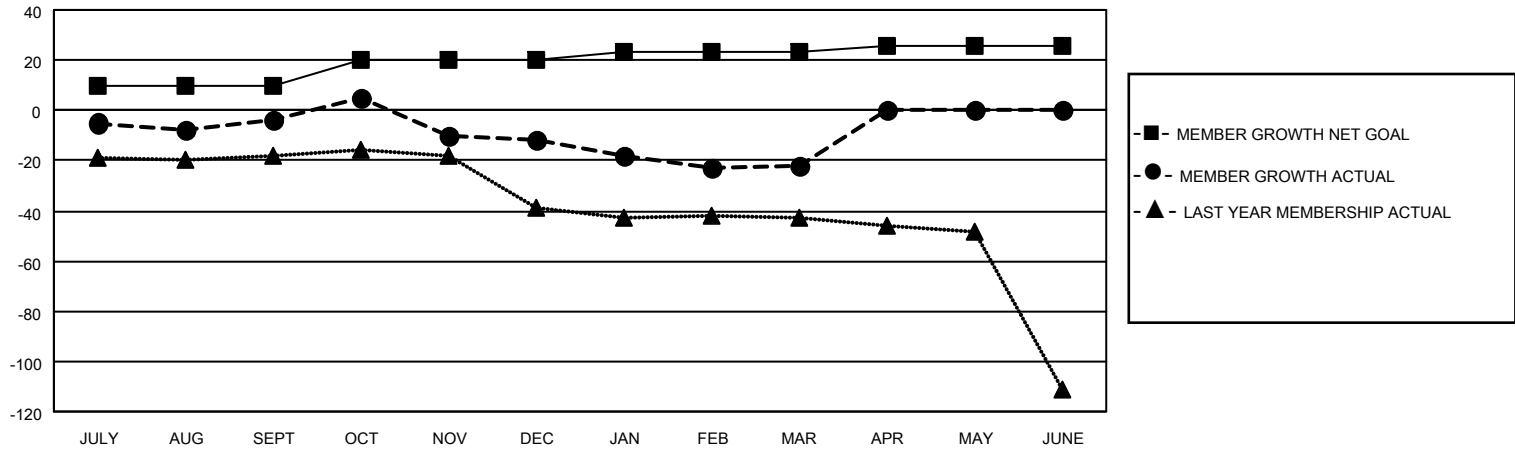
Clubs			
RESULTS FOR 2022-2023			
QUARTER	NEW CLUB GOAL	NEW CLUBS	DROPPED CLUBS
JULY/AUG/SEPT	2	0	0
OCT/NOV/DEC	2	0	0
JAN/FEB/MAR	0	0	0
APR/MAY/JUNE	0	0	0

Members			
RESULTS FOR 2022-2023			
QUARTER	MEMBER GROWTH NET GOAL	MEMBER GROWTH ACTUAL	DROPPED MEMBERS ACTUAL (including transfers)
JULY/AUG/SEPT	10	38	35
OCT/NOV/DEC	10	32	36
JAN/FEB/MAR	3	14	21
APR/MAY/JUNE	3	0	0

GOALS AND ACTUAL NEW CLUBS CUMULATIVE



GOALS AND ACTUAL MEMBERS CUMULATIVE



DROPPED CLUBS: 0	
<u>DROPPED MEMBERS</u>	
DECEASED	8
CLUB CANCELLED	0
OTHER	84
TOTAL	92

20 CLUBS OF 42 ADDED 1 OR MORE NEW MEMBERS

[CLICK HERE FOR CUMULATIVE MEMBERSHIP DATA](#)

<u>GENDER DISTRIBUTION</u>	
MALE	747 (74.03%)
FEMALE	261 (25.87%)
NON BINARY	0 (0.00%)
PREFER NOT TO ANSWER	1 (0.10%)
TOTAL FAMILY UNIT MEMBERS	132
FAMILY MEMBERS PAYING HALF DUES	67